



many lives. one journey...

the journey church



Dream - a hope, an aspiration, a vision, an exciting future, catalyst for life change, and a journey anticipated. Some dreams are worth pursuing and some are just for the pleasure of the dreamer. I want my dreams to make a difference.

A dream that is worth pursuing is a dream that involves others and that captures the heart of the dreamer first. That's where I am. I have been pursued by a vision of the future that I now pursue relentlessly. That vision is of life-change, a discovery of life that is reflected by an abundance of meaning and service to others. I desperately want to see people discover the journey of a growing relationship with Jesus. I want to help people take their next step on the journey of knowing Jesus. A relationship with Jesus is the only one that harnesses real life-change...forever! That's The Journey Dream!

My heart aches for the ones in our community and world that need a life-changing relationship with Jesus. Will you for a moment reflect on your passion for those without Jesus with me? I am asking you to join me in this journey of life-changing ministry to Valdosta. Although you may not live in Valdosta, you can change the lives of many in Valdosta. How? Help The Journey Church of Valdosta pursue that dream.



Dr. Jimmy D. Baughcum
Lead Pastor
The Journey Church
3825 Orchard Way
Valdosta, Georgia 31605
229.292.3892 mobile
jimmy@4thejourney.com
twitter.com/jbaughcum

The next few pages describe how my family, a group of Valdostans, and I have been guided by Christ to pursue that dream and calling. Come with us for a few moments to discover The Journey.





Why Another Church?

The population growth of The U.S. is outpacing the number of available churches at alarming rates. For example, in 1950 there were 27 churches for every 10,000 Americans, but in 2004 there were only 11 churches for every 10,000 Americans. If this trend continues in the U.S., by 2050 only 11.7% of the U.S. will attend church. Peter Wagner said, "The single most effective evangelistic methodology under heaven is planting new churches."

-Scott Kindig, of the Georgia Baptist Convention, has stated that 95% of Americans under 30 years of age have said "no" to the church.

-Georgia has over 9 million residents with at least 7 million unchurched. It is estimated by the Georgia Baptist Convention that by 2020, over 9.7 million will be unchurched in Georgia. We need more investment in the Gospel, not less.

Why Valdosta?

Within three (3) miles of Valdosta Baptist Association churches:

-There are nearly 150,000 people.

-Since 1980 the population has grown 49%, but in the same time, the local VBA resident membership has grown 28%.

-In 2008, 1 out of 8 people (12% of the population) were members of VBA churches.

-In the next 5 years the population is expected to grow another 14%.

Valdosta is home to Valdosta State University with over 12,000 students.

Moody Air Force Base employs nearly 5,500 enlisted and civilian personnel.

Valdosta High School and Lowndes High School educate nearly 5,000 high school students each year.

Valdosta has been called the "city without limits."

Valdosta awaits hope without limits as shared by the church of Jesus.

The Greater Valdosta Region includes mostly families between the ages of 20 and 50. These ages reflect families with children, teens and college students. The median age of Lowndes County is 30.5 years old. The influence of Moody Air Force Base and Valdosta State University have created an environment of openness to varying backgrounds. The Journey is primarily designed to be inviting to those younger to median families. Valdosta is just large enough to provide some density in small city life with open country for enjoyment and growth.



The Journey Vision

The Journey Dream is to be a place where the searching, hurting and lost can discover a growing relationship with Jesus among a loving and leading family of believers.

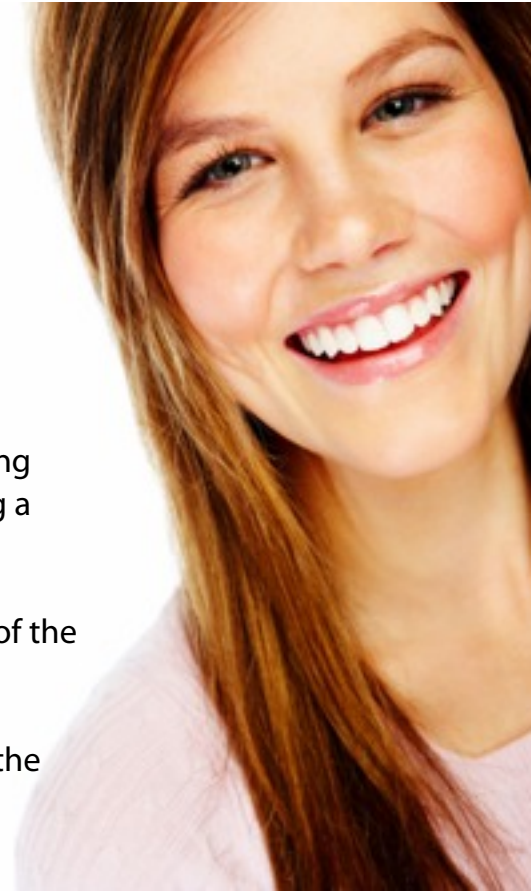
The Journey Dream is to challenge the nearly 150,000 people of the greater Valdosta region with the Gospel of Jesus Christ.

The Journey Dream is to welcome hundreds of members into the family of The Journey where they can fellowship and serve in harmony together.

The Journey Dream is to lead people to take their next step in a growing relationship with Jesus through Worship, Bible Studies, small groups and a Personalized Spiritual Growth Map for their Journey.

The Journey Dream is to equip every believer for significant ministry through gift discovery and engagement in ministry. We have a goal of 80% serving in a meaningful capacity through The Journey.

The Journey Dream is to launch hundreds into the journey of mission throughout our world with the purpose of strengthening or launching churches that invite people to Jesus.



The Journey Mission



The Journey Church exists to glorify God by leading people to discover the journey of a growing relationship with Jesus.

Break it down...

Glorify God - Our PURPOSE - Our highest purpose is the praise of our living God. He is the only one to receive glory. We are trusting Him to accomplish more than we could ourselves.

Leading people - Our PEOPLE - We are committed to never travel this journey alone. The journey is in the context of community and discipleship. This is where we have our greatest life-change and influence.

Discover the Journey - Our PROCESS - We will lead people into the process of knowing Jesus, Growing in Jesus and Going in service with Jesus.

Growing relationship with Jesus - Our PRIORITY - Everybody has the potential of a deepening relationship with Jesus and this is our priority for people.



The Journey Strategy

Contemporary Worship - We seek to develop a simple Sunday structure that focuses on Worship for Adults and life-changing environments for children. Our worship is band-driven and creatively lifts our praise to God.

Discover Team - We welcome guests to The Journey from invitation to involvement through friendly people we call the Discover Team. We desire to fully connect with others as we share Jesus with them, involve them in a Journey Group and invite them into full membership in The Journey.

Journey Groups - We involve students and adults in semester based small groups. Our desire is to get people out of rows and into deepening circles of relationships.

CLASS Seminar System - We follow a process of moving people through paths of growth and connection from guest to mission.

The CLASS Seminar System includes the following:

- Discover the Journey**-Membership
- Journey into Growth**-Maturity (Spiritual Growth Map)
- Journey into Ministry** (Discover Gifts and Ministry)
- Journey into Mission** (Involving people in reaching others for Jesus throughout the World)

Our desire is to lead people to take the NEXT STEP in their spiritual journey with Jesus.

The Journey STEPS in 4 Words:

CONNECT - Invite others to The Journey

DISCOVER - Investigate Christ & The Journey

GROW - Engage in Growing in Christ and with each other

GO - Invest in Ministry & Mission with Personal Involvement



The Journey Values

The Journey values people. People matter to God and they matter to The Journey. The hearts of the people of the journey beat for the people of Valdosta and the world.

The Journey values biblical application. God's Word is living and provides all the instruction a believer needs to know Christ, grow in relationship with Christ and go in ministry and mission.

The Journey values growth. The people of The Journey lead others to discover a growing relationship with Jesus. This growth involves clear application of God's Word to their lives. The people of The Journey also value the growth of the church. God intends for His church to grow.

The Journey values generosity. The Journey challenges people to be generous in their living, serving and giving (i.e. forgiveness, grace, etc). God's people are never more like God than when they live generously.

The Journey values excellence. God calls us to present the best to Him. The best involves constant evaluation and a willingness to change to accomplish the mission of Jesus. At The Journey methods always serve the mission.



The Journey Launch Strategy

We will continue to grow a **Launch Team** to build leadership and momentum for The Journey Launch. Once the launch period is complete the launch team will be incorporated into other teams for ministry. (i.e. Worship Team, Journey Groups, Journey Kidz and Students, Discover Team, Facility Team, Admin Team, etc.)

Lead fully developed Monthly **Preview Services** prior to launch Sunday designed to build momentum in the launch and to give our teams opportunity to evaluate and excel.

Some Benefits of Preview Services: Preview Services attract a Launch Team; Build momentum; Give a chance to grow prior to the official launch; Provide more time for follow-up; Enable more efficient use of initial resources; Lower the stress level of the launch team; Make the launch day less intimidating; Build a greater awareness of the church; Help the church to stick with the launch date; Allow the opportunity to test the meeting location; Allow the opportunity to test systems and worship; Build a database of future weekly attenders; Provide more planning time; and, Build a greater sense of expectation.

Host **"Come Back" Events** after each monthly Preview Service to engage people in the dream, instill vision, build interest, add team members and share how to connect to The Journey Church and its mission. Some will even give their lives to Jesus in these times. These are to be nonthreatening, fellowship-based events.



The Journey Launch Team

The Journey Launch Team growing to more than 40 in just over a month is organized into six (6) teams that include a Discover Team, a Facility Team, a Worship Team, a Journey Kidz Team, a Launch Admin Team and a Promotion/Marketing Team. These teams function together to launch The Journey Church efficiently and effectively.



The Journey Time-Line

June 2011 until January 22, 2012 - Gather a Launch Team to launch The Journey Church
September 11, 2011 - The First Preview Service at Rainwater Conference Center at 6 pm
October 16, 2011 - Preview Service at Rainwater Conference Center at 6 pm
November 13, 2011 - Preview Service at Rainwater Conference Center at 6 pm
December 18, 2011 - Preview Service at Rainwater Conference Center at 6 pm
January 8, 2012 - Final Preview Service at Rainwater Conference Center at 6 pm
January 22, 2012 - LAUNCH DAY Worship at Rainwater Conference Center at 11 am
January 22, 2012 - Journey Kidz Worship Begins at 11 am
March 11, 2012 - The First Discover the Journey CLASS for membership
April 8, 2012 - The First Easter Celebration
May 6, 2012 - The Second Discover the Journey CLASS for membership
August 12, 2012 - Official Launch of The Journey Groups
January 27, 2013 - First Journey into Maturity CLASS

Proposed Worship Location

The Journey Church will meet at The Rainwater Conference Center in Valdosta, Georgia on September 11, 2011 at 6 p.m. for the first worship service. The conference center makes greater financial sense than constructing or leasing a facility at the launch stage.

The Rainwater Conference center provides a 47,000 square foot facility that overlooks a beautiful cypress pond with ample parking for groups large and small. For example, one hall can seat over 1,000.





The Journey Faith

We believe the entire Bible is the inspired Word of God and that men were moved by the Spirit to write the words of Scripture. Therefore, the Bible is without error.

We believe in one God who exists in three distinct persons (Father, Son, and Holy Spirit). We believe that Jesus Christ is the second member of the Trinity (the Son of God) who became flesh to reveal God to man and to become the Savior of the lost world.

We believe that man was created in the image of God to have fellowship with Him, but became alienated from that relationship through sinful disobedience. As a result, man is totally incapable of coming back into a right relationship with God by his own effort. Man needs Jesus!

We believe that the shed blood of Jesus Christ on the cross provides the sole basis for the forgiveness of sins. Therefore, salvation only occurs when a person abandons his sin and selfishness and places his faith in the death and resurrection of Christ as the sufficient payment for his sin.

We believe that every Christian should live for Christ and not for himself. By obedience to the Word and daily yielding to the Spirit, every believer will mature and become conformed to the image of Christ.

We believe that the church is the body of Christ of which Jesus Christ is the Head. The members are those who have trusted by faith the finished work of Christ. The purpose of the church is to glorify God by loving Him and by making Him known to a lost world.

(For a more detailed view of the beliefs of The Journey see "The Essentials We Believe" Statement on our website at www.4thejourney.com)



The Journey Budget



Budget Area	PREVIEW/ PRELAUNCH (JULY 2011- JAN 2012)	ANNUAL BUDGET (FEB 2012 - DEC 2012)
FACILITIES (RENTAL/SETUP)		
Rental/Setup	\$7,000.00	\$55,000.00
OPERATIONS		
Administration	\$7,000.00	\$25,000.00
Programming	\$3,000.00	\$10,000.00
Insurance	\$2,500.00	\$9,000.00
Promotion	\$12,000.00	\$10,000.00
MINISTRY TEAM		
Wages/Housing	\$20,000.00	\$110,000.00
Insurance	\$3,500.00	\$11,000.00
DISCIPLESHIP		
Adult/Journey Groups	\$1,000.00	\$9,000.00
Students/Children	\$5,000.00	\$15,000.00
MISSION		
Local and Global Missions	\$1,000.00	\$5,000.00
Cooperative Program Missions		\$26,900.00
WORSHIP		
Worship Support	\$35,000.00	\$10,000.00
TOTAL	\$97,000.00	\$295,900.00

Investment Opportunities

You, your church, small group, discipleship group or family could make a huge investment into The Journey by investing into an area of the budget. More energy and resources are required to launch. Please consider helping with the initial investment in the launch of The Journey Church.

Suggested Levels of Support:

- The Dream Team - 2,000 a month or one time gift of 24,000
 - Partners - 1,000 a month or one time gift of 12,000
 - Friend - 500 a month or one time gift of 6,000
 - Support Team - Any consistent investment
- (*Don't feel limited by any of these suggestions)



Partner with The Journey

Prayer

The Journey needs you to pray. Ask God to prepare the hearts of our friends and neighbors to hear the Gospel of Jesus. Please commit to pray for The Journey Church and our ability to lead people to discover the journey of a growing relationship with Jesus in Valdosta.

Mission Team

The Journey asks that churches consider sending a team to help us invite our community to The Journey this fall.

Join the Team

Discover the journey with us. Attend one of our services or Launch Team Meetings. Call or email for more information.



Financial Support

Your financial support will empower us to launch larger and develop a greater influence in Valdosta for Jesus. You'll help The Journey connect with people who would be drawn to Jesus through The Journey Church but simply don't know about us right now. There are several ways you could support us financially.

To Give

One Time Gifts - You may give a one time monetary gift.

Recurring Gifts - Your ongoing support for one year makes a BIG difference.

Gift of Stock, Bonds or Other Items of Value - The Journey accepts non-traditional gifts.

Make checks out to *The Journey Church* and mail them to the following address:

The Journey Church

P. O. Box 4386

Valdosta, GA 31604

229.375.0077

info@4thejourney.com

You may visit www.4thejourney.com to make a gift with a credit card or e-check.

As you give, please note the opportunities of investment listed with the budget.