




Rise Community Church Welcomes You to Lake Mary



-  **Welcome**
-  **Overview**
-  **Timeline**
-  **Our Past**
-  **Our Future**
-  **Projections**
-  **Partnerships**

Welcome

Welcome to Lake Mary...

The sleepy bedroom community where you can live the American dream. We offer an abundance of high paying jobs. You can while away the hours shopping in any number of malls and boutiques. Golfing, boating, and a number of other activities beckon, all while your children are getting the best possible public or private education in the country.

This is the kind of life that many of our people lead. They think they are living the American dream, but is it really living if you are spiritually asleep?

As the pastor of a new church plant in Lake Mary I have seen transformation in the lives of some through our church, yet still see a great need for the majority of the community.

We have put together this master plan to help you familiarize yourself with what is going on with the spiritual needs of the people in Lake Mary, where only 1% of the population are considered Evangelical Christians. Pleasantly anesthetized, they sleep-walk through life, not knowing that they are doing so on the edge of a precipice.

We are excited about the prospect of breaking through the veil of darkness that seems to have prevailed for so many years in this community. How does a small community of believers, wake a whole community of people? We can with your help.

In Christ,
Pastor Lenny Faulk

*..for the light makes
everything visible. This is
why it is said,*

*“Awake, O sleeper,
rise up from the dead,
and Christ will give you
light.”*

Ephesians 5:14

*Awake,
O sleeper*

Welcome

 Overview

 Timeline

 Our Past

 Our Future

 Projections

 Partnerships

Overview

Lake Mary is a community that lies on the Northern cusp of the Greater Orlando area, which has more than 2 million people. Strategically placed in Seminole County and at the interchange of the two major highways that serve Orlando (I-4 and 417), Lake Mary serves as the technological hub for many international industries. Driven by this techno economy, there are many career opportunities that draw families from all over the world.

Seminole County is a place where religious diversity thrives. In fact, there are several large religious organizations that are growing rapidly, including a mega Hindu temple and several Jewish synagogues. Yet even with these competing systems of belief, the most recent data showed that only 6.3% of residents in Seminole County attended any faith-based services. Even more shocking, only 1% of the county population would be classified as Evangelical Christian.

Within the Central Florida region, Lake Mary is considered the hardest place to plant an Evangelical Church. Our community has earned the name 'The Church Planting Graveyard' of Central Florida. It has been 21 years since a successful church plant has launched, grown, and remained in Lake Mary. In the past three years, we have seen two churches leave our community in order to grow.

Networks and denominations have withdrawn support for church starts in Lake Mary, deeming it as too difficult a community in which to gain traction. In essence, they have said 'to Hell with Lake Mary.' We refuse to accept that.

'I will build my church, and all the powers of hell will not conquer it.'
Jesus in
Matthew 16:18

I will build my church...

 Welcome

 Overview

 Timeline

 Our Past

 Our Future

 Projections

 Partnerships

Timeline of Growth

2007

RiseCC core team began meeting as a small group of six people.

2008

We began meeting as a house church and grew to twenty.

2009

Rented Lake Mary Elementary and prepared for launch.

Later that year, we officially launched.

2010

Began participating in Community Outreach events and grew to a community of 40 people.

2011

Continuing to do outreach via community events.

Growing community service involvement.

Currently our population is at 80 people.

50% of our church community dedicated their lives to Christ through RiseCC.

80% of our church population, prior to connecting to Rise, was unchurched.

 **Welcome**

 **Overview**

 **Timeline**

 **Our Past**

 **Our Future**

 **Projections**

 **Partnerships**

Every strategic effort we pursue as a church body seems to have greater and greater return on that investment of prayer, time, energy, and money. The more often we pursue specific initiatives, the more effective we find them to be.



Welcome



Overview



Timeline



Our Past



Our Future



Projections



Partnerships

Our Past: What We Have learned

What Works

In Seminole County, we have found the following to be true:

- Many of the families have many options for what they will do, where they will do it, and how they will spend their time. We must *provide varied ways for people to connect* to others and to get involved.
- *Longevity is key.* For the people here to consider your church as a place to visit, you have to have been around for a long time. They have seen many churches come and go; they need to see your organization active in the community and to be invited through multiple venues such as personal invitations, outreach events, mailers, and social media.
- *They want to get involved and do for others,* outside of their sphere of existence. Many people here give to charities or participate in fundraising benefits, even if they aren't plugged into a church body. As a community of means and wealth, they have surplus and they want to give to those in need.

We must be missional and attractional—and we must be excellent at both methods of pursuit.

What Doesn't Work

We have learned the following as we have served in our community:

- Anything less than excellence does not reach our people. This is a community that is used to the best of everything and the finest of things. It doesn't work to have ministries of quality that are just enough 'to get by and provide something'. In fact, that mentality is a death blow to a church here. It will ensure that your visitors never come back. It's better to not have a ministry, than to have one that is not truly ready to put it's best foot forward.
- Children's services that are not completely outstanding are not acceptable. Our people invest heavily in their children. Seminole county is home to premier public and private schools, athletic clubs, and many other developmental activities for young people. The parents spend thousands of dollars annually on entertainment and enrichment for their kids—and what they get for them is top of the line.

Everything we do, must be top of the line.

Our Future: What's Next

Based on what we have learned about our community, RiseCC already has plans for and is actively pursuing the following strategic efforts to grow our church:

- Growth of Connection Points
- Continued Outreach
- Growth of Service Ministries
- Implementation of the premeir children and youth

curriculum: Orange. In the near future, RiseCC will be expanding and improving on our children's and youth ministries. In partnership with reThink Group, who has agreed to sponsor our first year of use their curriculum materials for our preschool and secondary level students, Rise will be implementing a comprehensive strategy for educating all levels of youth on the attributes of God. The key strength in this approach is that it involves the church and the entire family in the process. By leveraging our community's desire to invest in their children and providing them with the tools to do so, we believe we can have a greater impact for the Kingdom of God in Lake Mary.

Each year we see a consistent rate of increase in the number of conversions and baptisms through RiseCC.

Next year, we can continue to see growth, with God's blessing and your help.

 **Welcome**

 **Overview**

 **Timeline**

 **Our Past**

 **Our Future**

 **Projections**

 **Partnerships**

...go and make disciples of all the nations, baptizing them in the name of the Father and the Son and the Holy Spirit. Teach these new disciples to obey all the commands I have given you.

Matthew 28: 19-20a

Income & Expense Projections

<i>Budget</i>	<i>2009 Actual</i>	<i>2010</i>	<i>2011 Projected</i>	<i>2012 Projected</i>
Tithe & Offering	21,375	36,843	64,115	100k
Church Partnerships	5,000	12,000	24,000	24k
Expenses	67,241	76,812	98,467	138k
Surplus/Need	(40,866)	(27,969)	(10,352)	(14k)

Taking root in a community of affluence will provide a great resource for future funding of furthering the Gospel both locally and globally. However, getting the roots of our church to take, requires delivering the Gospel through a vehicle of excellence. We invest in technology and resources, that we in turn multiply by investing in people. Growing individuals in our community, equips them to further the Kingdom. It is church multiplication at the individual level.

*³Every time I think of you, I give thanks to my God.
⁴Whenever I pray, I make my requests for all of you with joy,
⁵for you have been my partners in spreading the Good News about Christ from the time you first heard it until now.*

Phillipians 1:3-5

 Welcome

 Overview

 Timeline

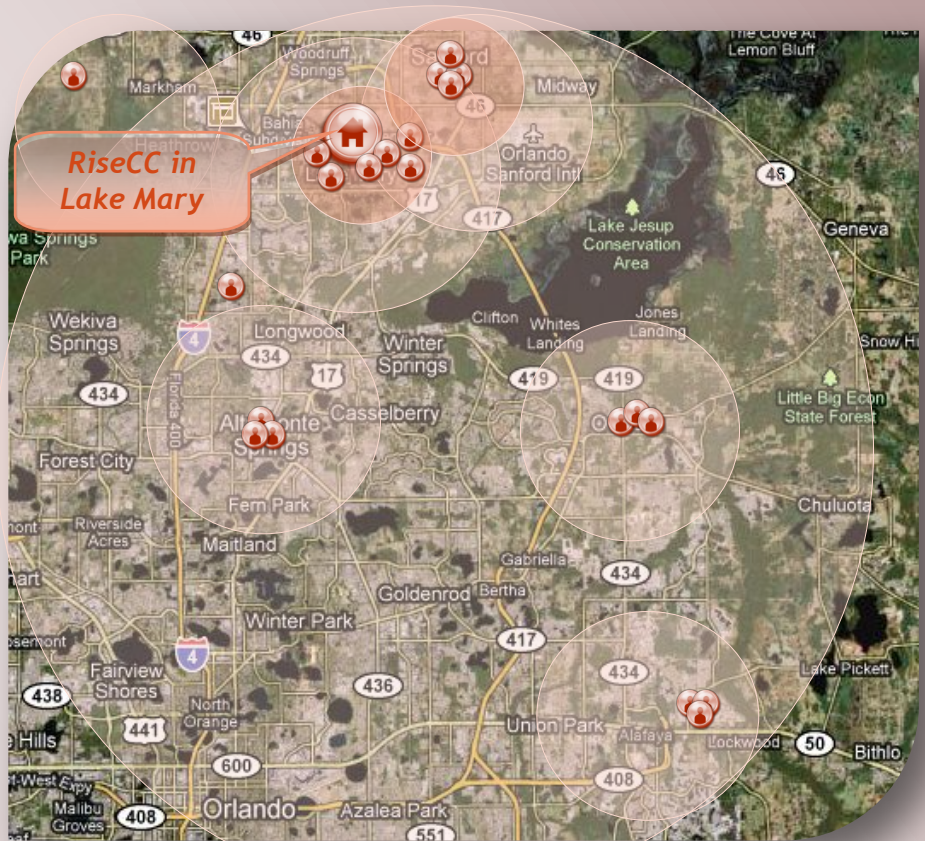
 Our Past

 Our Future

 Projections


 Partnerships

Growth Projections



⁴⁶ They worshiped together at the Temple each day, met in homes for the Lord's Supper, and shared their meals with great joy and generosity—
⁴⁷ all the while praising God and enjoying the goodwill of all the people. And each day the Lord added to their fellowship those who were being saved.

Acts 2:46-47

-  **Welcome**
-  **Overview**
-  **Timeline**
-  **Our Past**
-  **Our Future**
-  **Projections**
-  **Partnerships**

Because we are at the junction of two major interstates that serve the Greater Orlando area, we are uniquely positioned to meet the needs of a large community.

Our sphere of potential growth is expansive. The map above provides a graphical overview of where we have core team members geographically dispersed throughout Central Florida.



Partnering with Rise Community Church

36When he saw the crowds, he had compassion on them because they were confused and helpless, like sheep without a shepherd. 37He said to his disciples, "The harvest is great, but the workers are few. 38So pray to the Lord who is in charge of the harvest; ask him to send more workers into his fields."

Matthew 9:36-38

Prayer

One way that every person and organization who is a friend of Rise can support the growth of the church in Seminole County, is through prayer support. Rise CC distributes a weekly prayer request to more than 75 individuals that requests and reminds people that we need their prayer support. In addition, several church organizations are praying consistently and regularly for the people of our community to draw near to God and for the growth and success of Rise.

Financial Support

Currently, RiseCC benefits from the financial support of several tithing church body members. These people are committed to giving to and serving the community through Rise.

RiseCC has also received support and scholarshipped materials from several local and global church organizations including:

- Orange: Provided by the reThink Group
- The Christian & Missionary Alliance
- Northland, A Church Distributed
- Neighborhood Alliance Church
- Mineola Alliance Church
- Saddleback Church
- Granger Community Church
- Theophostic Prayer Ministry
- Alpha USA
- Mosaic

While we are encouraged by the investment of time, resources, and prayer of our existing partners, we must continue to expand our support network so that we can move forward with the degree of excellence that our community requires.



Welcome



Overview



Timeline



Our Past



Our Future



Projections



Partnerships
